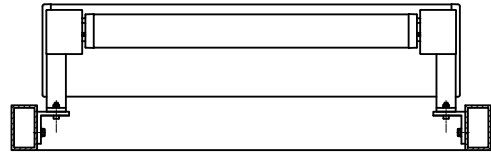
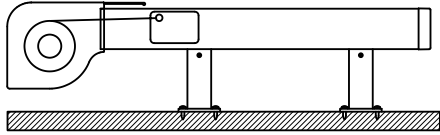


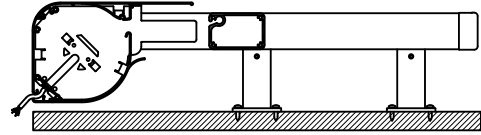
Life Zip - Vorderansicht



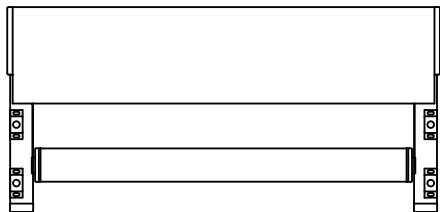
Life Zip - LeibungsmontageVorderansicht



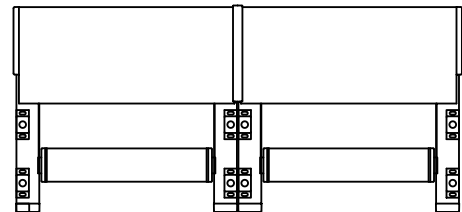
Life Zip - Seitenansicht



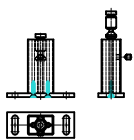
Life Zip - Seitenansicht - Kabelaustritt



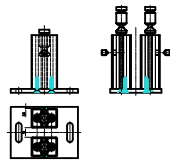
Life Zip - Draufsicht



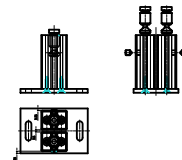
Life Zip - Zweiteilige Anlage Draufsicht



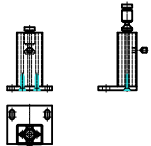
Life Zip -
Führungsschienenhalter; 90mm
(Standard) 150mm/200mm



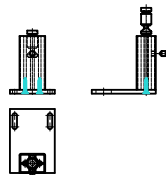
Life Zip -
Doppel-Führungsschienenhalter
für Reihenmontage; 90mm
(Standard) 150mm/200mm



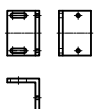
Life Zip -
Doppel-Führungsschienenhalter
für Typ D; 90mm (Standard)
150mm/200mm



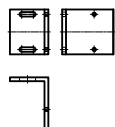
Life Zip -
Führungsschienenhalter
versetzt 60mm; 90mm
(Standard) 150mm/200mm



Life Zip -
Führungsschienenhalter
versetzt 100mm; 90mm
(Standard) 150mm/200mm



Life Zip -
Leibungswinkel 50mm



Life Zip -
Leibungswinkel 80mm



Life Zip - Zugbalken
Querschnitt



Life Zip - Führungsschiene
Querschnitt